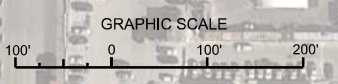


MATCHLINE SHEET NO. 012 STA. 82+00

MATCHLINE SHEET NO. 010 STA. 53+00

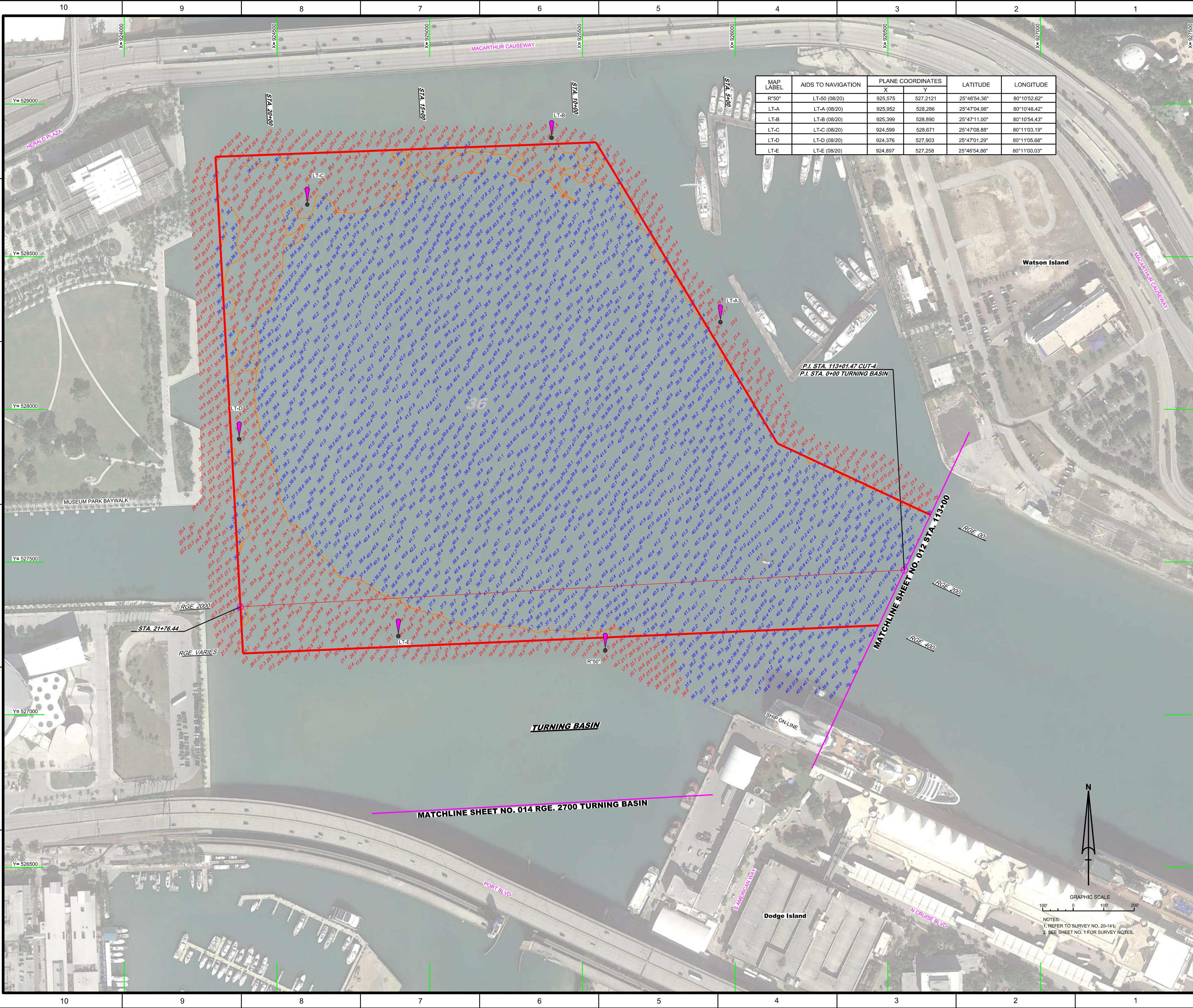
RGE 00
RGE 200
RGE 400

RGE 00
RGE 200
RGE 400




NOTES:
1. REFER TO SURVEY NO. 20-141.
2. SEE SHEET NO. 1 FOR SURVEY NOTES.

 US Army Corps of Engineers Jacksonville District SAFETY ON THIS JOB DEPENDS ON YOU	
Project Name: Project No.: Date: Scale:	Drawing No.: Date: Scale:
DEPARTMENT OF THE ARMY JACKSONVILLE DISTRICT, CORPS OF ENGINEERS JACKSONVILLE, FLORIDA	
HYDROGRAPHIC EXAM SURVEY FY20 35, 36, 50 AND 52-FOOT PROJECT STA. 53+00 THRU STA. 82+00 CUT-4 PLAN	
SHEET 11 OF 18	



MAP LABEL	AIDS TO NAVIGATION	PLANE COORDINATES		LATITUDE	LONGITUDE
		X	Y		
R*50"	LT-50 (08/20)	925,575	527,212	25°46'54.36"	80°10'52.62"
LT-A	LT-A (08/20)	925,952	528,286	25°47'04.98"	80°10'48.42"
LT-B	LT-B (08/20)	925,399	528,890	25°47'11.00"	80°10'54.43"
LT-C	LT-C (08/20)	924,599	528,671	25°47'08.88"	80°11'03.19"
LT-D	LT-D (08/20)	924,376	527,903	25°47'01.29"	80°11'05.68"
LT-E	LT-E (08/20)	924,897	527,258	25°46'54.86"	80°11'00.03"



US Army Corps of Engineers
Jacksonville District

SAFETY ON THIS JOB
DEPENDS ON YOU

DEPARTMENT OF THE ARMY
JACKSONVILLE DISTRICT, CORPS OF ENGINEERS
JACKSONVILLE, FLORIDA

Checked by: GHR
Designed by: WRM
Drawn by: WRM
Title: AUG 2020

20-14-ACON/BDON
20-14-AMAV/DON
20-14-ASOLA/CADON
20-14-HARBOR/CAN/CAC/CAEDON
20-14-HARBOR/BDON
Reference: MDC
20-14-HPH/LDON

MAMI HARBOR
DADE COUNTY, FLORIDA
**HYDROGRAPHIC EXAM SURVEY FY20
35, 36, 50 AND 52-FUR PROJECT**
STA. 113+00 CUT-4 THRU STA. 21+76.44 TURNING BASIN
PLAN

Scale: AS SHOWN
Drawing no. **13**
SHEET 13 OF 18




GRAPHIC SCALE
100' 0 100' 200'

NOTES:
1. REFER TO SURVEY NO. 20-141.
2. SEE SHEET NO. 1 FOR SURVEY NOTES.




MAP LABEL	AIDS TO NAVIGATION	PLANE COORDINATES		LATITUDE	LONGITUDE
		X	Y		
R'18"	Lt-18 (08/20)	925,476	524,016	25°46'22.72"	80°10'53.91"



US Army Corps of Engineers
Jacksonville District
SAFETY ON THIS JOB
DEPENDS ON YOU

DEPARTMENT OF THE ARMY JACKSONVILLE DISTRICT, CORPS OF ENGINEERS JACKSONVILLE, FLORIDA				
Designed by: WRM	Checked by: GHR	Drawn by: WRM	Date: AUG 2020	
XXXXXXXXXXXXXXXXXXXX XXXXXXXXXXXXXXXXXXXX XXXXXXXXXXXXXXXXXXXX	XXXXXXXXXXXXXXXXXXXX XXXXXXXXXXXXXXXXXXXX XXXXXXXXXXXXXXXXXXXX	XXXXXXXXXXXXXXXXXXXX XXXXXXXXXXXXXXXXXXXX XXXXXXXXXXXXXXXXXXXX	Reference Mark: 20-14-TM-P01-LDGN	
MIAMI HARBOR DADE COUNTY, FLORIDA HYDROGRAPHIC EXAM SURVEY FY20 35, 36, 50 AND 52-FOOT PROJECT WEST BERTHING AREA PLAN				
Scale: AS SHOWN				
Drawing no.				
14				
SHEET 14 OF 18				





 US Army Corps of Engineers

 Jacksonville District

 SAFETY ON THIS JOB

 DEPENDS ON YOU

Department of the Army

 Jacksonville District, Corps of Engineers

 Jacksonville, Florida

MAMI HARBOR

 DADE COUNTY, FLORIDA

HYDROGRAPHIC EXAM SURVEY FY20

35, 36, 50 AND 52-FOOT PROJECT

 STA. 8+00 THRU STA. 33+00 SOUTH SHIP CHANNEL

PLAN

MAP LABEL	AIDS TO NAVIGATION	PLANE COORDINATES		LATITUDE	LONGITUDE
		X	Y		
G*5	LT-5 (08/20)	935,635	520,993	25°45'52.14"	80°09'03.00"



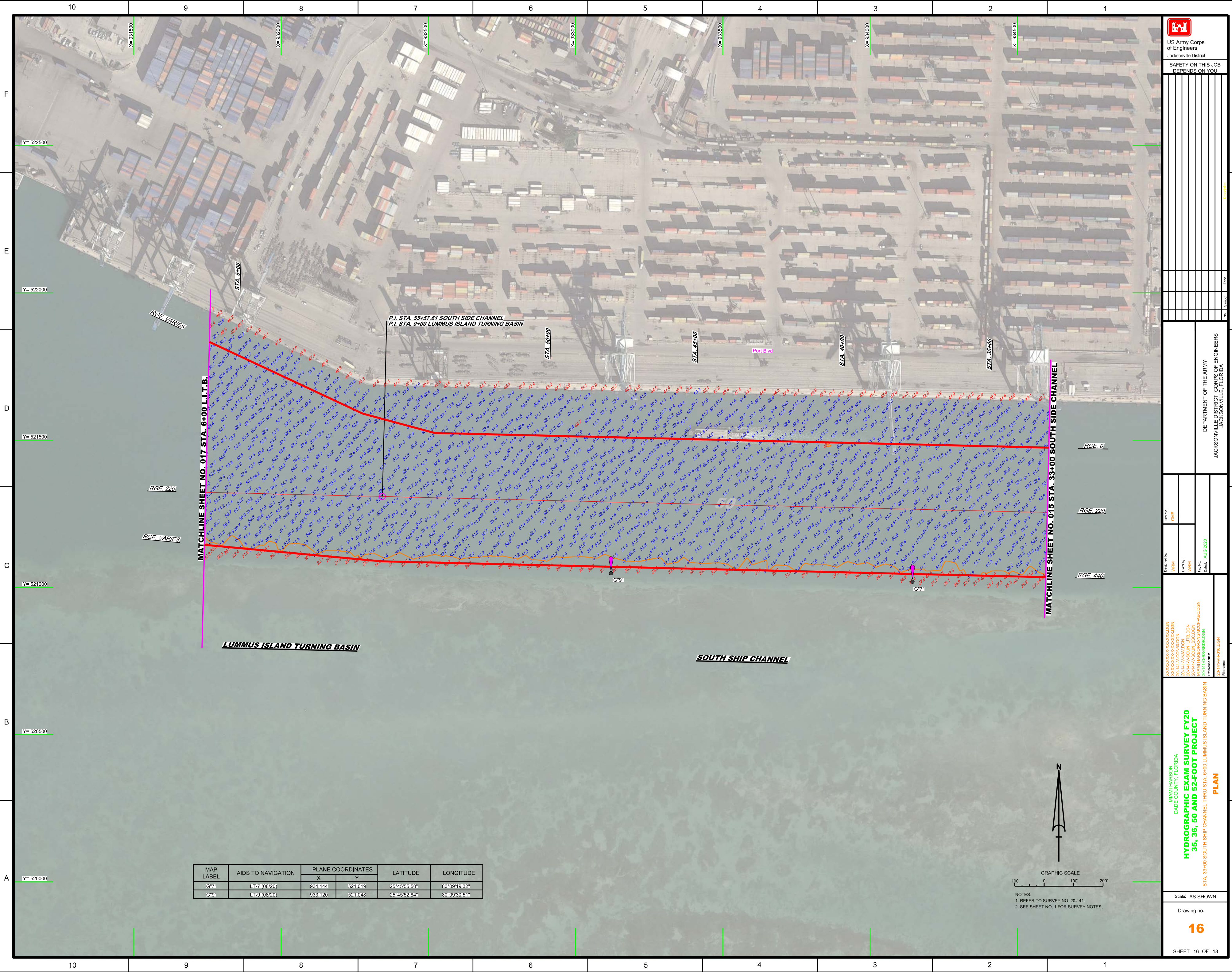
NOTES:
 1. REFER TO SURVEY NO. 20-141.
 2. SEE SHEET NO. 1 FOR SURVEY NOTES.


Scale: AS SHOWN

 Drawing no.

15

 SHEET 15 OF 18





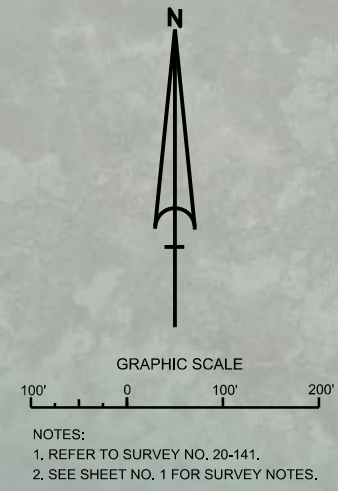
 US Army Corps of Engineers
 Jacksonville District
 SAFETY ON THIS JOB
 DEPENDS ON YOU

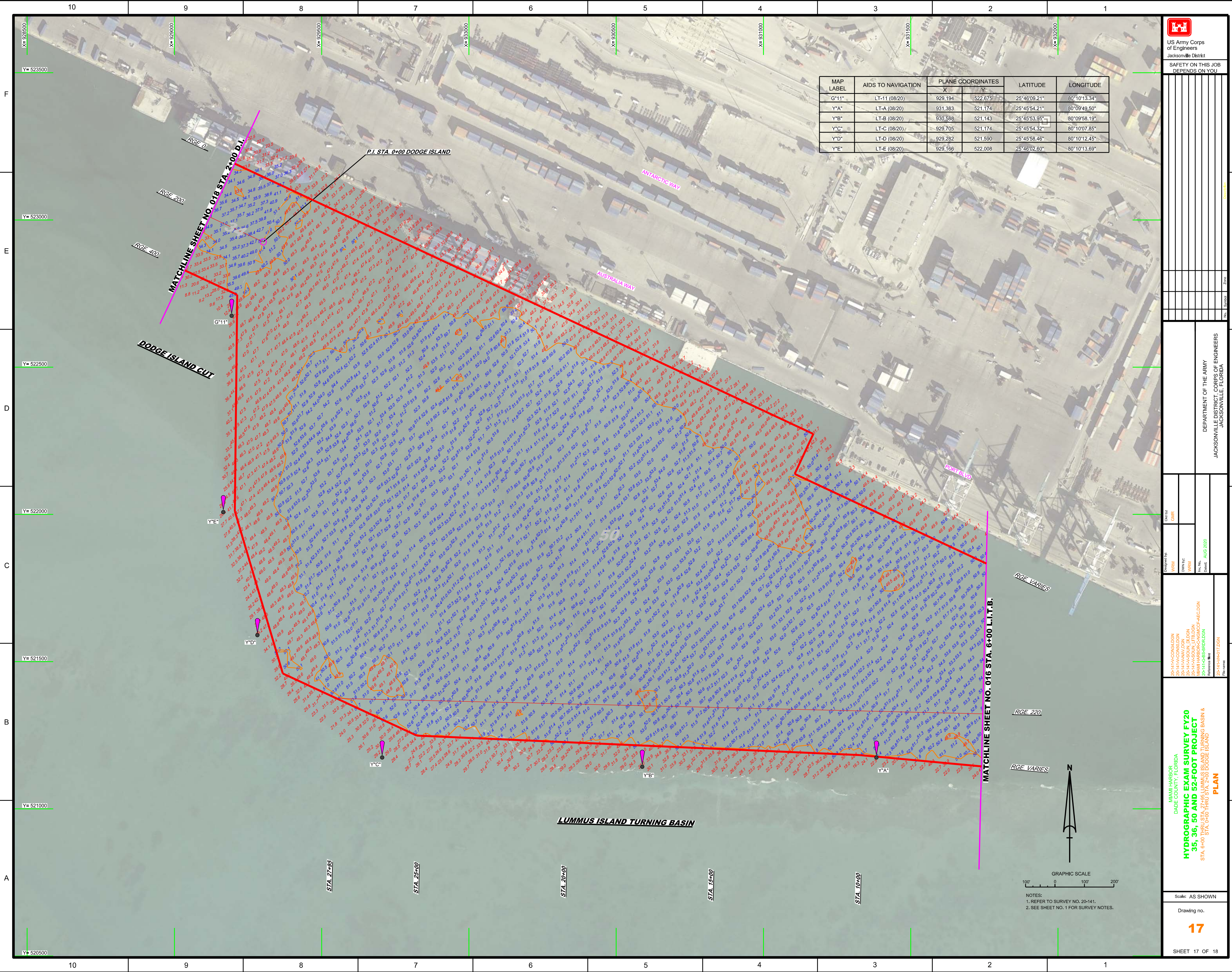
DEPARTMENT OF THE ARMY
 JACKSONVILLE DISTRICT, CORPS OF ENGINEERS
 JACKSONVILLE, FLORIDA

Designed by: WRM
 Drawn by: WRM
 Checked: AUG 2020
 MAMI HARBOR
 DDAE COUNTY, FLORIDA
 HYDROGRAPHIC EXAM SURVEY FY20
 35, 36, 50 AND 52-FOOT PROJECT
 STA. 33+00 SOUTH SHIP CHANNEL THRU STA. 6+00 LUMMUS ISLAND TURNING BASIN
 PLAN

Scale: AS SHOWN
 Drawing no.
16
 SHEET 16 OF 18

MAP LABEL	AIDS TO NAVIGATION	PLANE COORDINATES		LATITUDE	LONGITUDE
		X	Y		
G-7*	LT-7 (08/20)	334,144	521,019	25°45'55.50"	80°09'19.32"
G-9*	LT-9 (08/20)	333,120	521,048	25°45'52.84"	80°09'30.51"





MAP LABEL	AIDS TO NAVIGATION	PLANE COORDINATES		LATITUDE	LONGITUDE
		X	Y		
G*11*	LT-11 (08/20)	929,194	522,675	25°46'09.21"	80°10'13.34"
Y*A*	LT-A (08/20)	931,383	521,174	25°45'54.21"	80°09'49.50"
Y*B*	LT-B (08/20)	930,588	521,143	25°45'53.95"	80°09'58.19"
Y*C*	LT-C (08/20)	929,705	521,174	25°45'54.32"	80°10'07.85"
Y*D*	LT-D (08/20)	929,282	521,590	25°45'58.46"	80°10'12.45"
Y*E*	LT-E (08/20)	929,166	522,008	25°46'02.60"	80°10'13.69"

US Army Corps of Engineers
Jacksonville District

SAFETY ON THIS JOB
DEPENDS ON YOU

DEPARTMENT OF THE ARMY
JACKSONVILLE DISTRICT, CORPS OF ENGINEERS
JACKSONVILLE, FLORIDA

Drawn by: **WRM**

Checked by: **GHR**

DATE: **AUG 2020**

Project: **20-14-HARBOR-DADE**

Subproject: **20-14-HARBOR-DADE**

Task: **20-14-HARBOR-DADE**

Reference Map: **20-14-HARBOR-DADE**

Scale: **AS SHOWN**

Drawing No.: **17**

SHEET 17 OF 18

Project: **20-14-HARBOR-DADE**

Subproject: **20-14-HARBOR-DADE**

Task: **20-14-HARBOR-DADE**

Reference Map: **20-14-HARBOR-DADE**

Scale: **AS SHOWN**

Drawing No.: **17**

SHEET 17 OF 18

Project: **20-14-HARBOR-DADE**

Subproject: **20-14-HARBOR-DADE**

Task: **20-14-HARBOR-DADE**

Reference Map: **20-14-HARBOR-DADE**

Scale: **AS SHOWN**

Drawing No.: **17**

SHEET 17 OF 18

HYDROGRAPHIC EXAM SURVEY FY20
35, 36, 50 AND 52-FOOT PROJECT
 STA. 6+00 THRU STA. 27+00 LUMMUS ISLAND TURNING BASIN & STA. 0+00 THRU STA. 10+00 DODGE ISLAND

NOTES:
 1. REFER TO SURVEY NO. 20-141.
 2. SEE SHEET NO. 1 FOR SURVEY NOTES.

